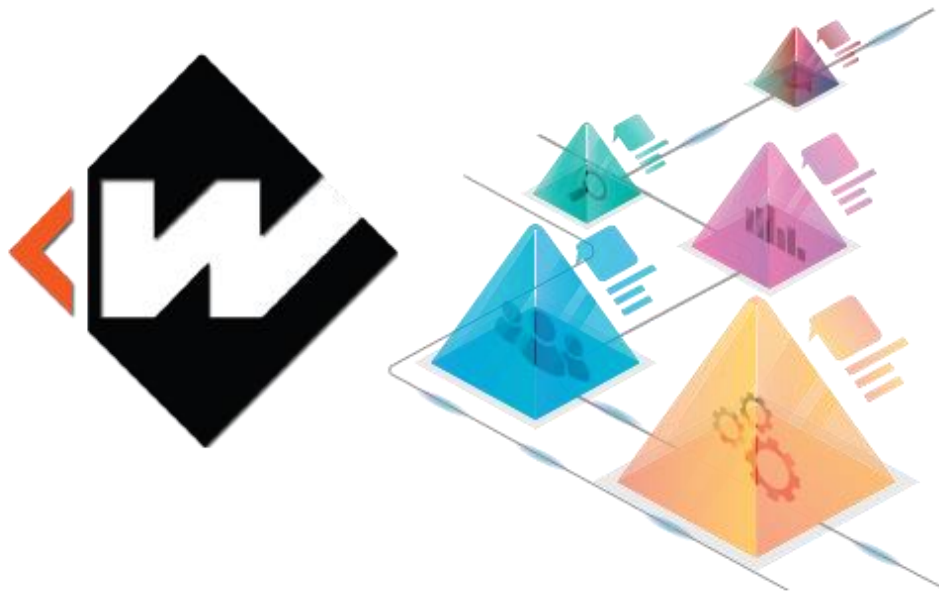




# CENSUS 2011 TOPIC PAPER

## TOPIC 2: Family and Household Composition

*WESTIR Ltd*  
2011



© WESTIR Limited A.B.N 65 003 487 965 A.C.N. 003 487 965

This work is Copyright. Apart from use permitted under the Copyright Act 1968, no part can be reproduced by any process without the written permission from the Executive Officer of WESTIR Ltd.

All possible care has been taken in the preparation of the information contained in this publication. However, WESTIR Ltd expressly disclaims any liability for the accuracy and sufficiency of the information and under no circumstances shall be liable in negligence or otherwise in or arising out of the preparation or supply of any of the information  
WESTIR Ltd is partly funded by the NSW Department of Family and Community Services.

**WESTIR LTD**

ABN: 65 003 487 965 | ACN: 003 487 965



mail@westir.org.au



(02) 9635 7764



Suite 7, Level 2  
154 Marsden Street  
Parramatta, NSW 2150  
PO Box 136 Parramatta 2124



## Topic 2: Family and Household Composition

The makeup of households and families has been gradually changing over time with smaller household sizes, more lone parent families, more lone person households and fewer couple families with children. Although the most common household composition was still a couple family with children, the proportion of this household type has been decreasing gradually over the past few censuses with some distinct differences between LGAs. The number of lone person households has been increasing over the past few censuses which may be due to a number of factors such as an ageing population, divorce, marrying later in life or even having an income that supports living alone rather than sharing with family or friends. This topic paper will provide detailed information about the family and household composition of the 14 LGAs that make up Greater Western Sydney (GWS) and selected other regions.

It should be noted that the information in the tables on the following pages come from different census tables and as such the total numbers may differ due to the different collection methods used during the collection and processing of census data.

## Family Households 2001 – 2011

Overall in GWS the proportion of family households decreased from 43.6% of all households in 2001 to 41.3% of all households in 2011. There was a decrease in couple families with children from 43.6% in 2001 to 41.3% in 2011 but an increase in Couple families with no children from 20.1% in 2001 to 20.4% in 2011. Lone parent families also increased from 12.6% in 2001 to 13.5% in 2011. This trend was apparent in the majority of GWS LGAs with the exception of Parramatta which was the only GWS LGA with an increase in the proportion of family households from 67.9% in 2001 to 68.9% in 2011.

The Hills Shire had the highest proportion of couple families with children in 2001 (53.2%) and also in 2011 (50.9%). Blue Mountains had the lowest proportion of couple families with children in both 2001 (34.6%) and 2011 (31.2%).

Wollondilly and Blue Mountains had the highest proportion of couple families with no children in 2001 (24.6% each) but in 2011 Blue Mountains had increased to 26.0%. Fairfield and Auburn had the lowest proportion of couple families in 2001 (16.7%) but by 2011 Auburn had increased to 19.7% whereas Fairfield remained the lowest at 16.7%.

In 2001 Campbelltown had the largest proportion of one parent families (17.1%) but this had decreased to 16.8% in 2011 and Fairfield became the LGA with the highest proportion increasing from 14.7% in 2001 up to 17.7% in 2011.

## Non Family Households 2001 – 2011

During the period 2001 to 2011 the proportion of lone person households increased from 16.4% to 17.4%, group households remained steady at 2.4% and other households increased from 3.5% to 3.8%. Other households comprise of those that are not family households but also do not fit the description of a lone person household or a group household or failed to provide enough information on the census form to properly classify them.

Blue Mountains had the largest proportion of lone person households in both 2001 and 2011 increasing from 23.5% in 2001 up to 24.5% in 2011. In 2001 Parramatta was not far behind Blue Mountains however the proportion of lone person households in Parramatta decreased from 22.7% in 2001 to 22.0% in 2011. The Hills Shire had the lowest proportion of lone person households in both 2001 and 2011 although it did increase slightly from 10.3% in 2001 to 11.7% in 2011.

The proportion of group households was quite small in all LGAs. However, in Parramatta 3.9% of household in 2001 were group households, increasing to 4.0% in 2011. This was marginally higher than Holroyd in 2001 (3.4%) but in 2011 Holroyd decreased to 2.6%. Blue Mountains also had a reasonably high proportion of group households with 2.9% in 2001 and 2.7% in 2011.

For more detailed information on Family and Household composition for 2001 - 2011 see Table 1 which is presented in three parts on the following pages.

## Relationship in Household

There were a total of 1,819,168 persons recorded as living in GWS in 2011. Each of these people had their stated relationship recorded and grouped. The largest group were those who stated they were a husband or wife in a registered marriage (728,389 persons or 40.0%) followed by Child under 15 (397,497 persons or 21.9%) and non-dependent child (160,879 persons or 8.8%). The number of partners in a defacto marriage (which included same sex relationships) at 79,886 persons (4.4%) was lower than the number of lone parents (91,221 persons or 5.0%) and the number of lone persons was higher than both at 110,657 persons (6.1%).

The Hills Shire had the highest proportion of husband or wife in a registered marriage (47.4%) and Campbelltown had the lowest (36.6%). Blue Mountains had the highest proportion of partners in a defacto marriage (7.4%) compared to Fairfield with a low of 2.5%. The proportion of lone parents in Campbelltown (6.3%,) was the highest in GWS and more than double that of the Hills Shire (3.0%) which had the lowest. Blue Mountains had the highest proportion of lone persons (10.2%) which was almost three times The Hills Shire (3.9%), the lowest in GWS.

The proportion of children varied greatly between LGAs. Camden had the highest proportion of children under 15 (24.5% or 13,236 persons) which was higher than Blacktown (23.8%) but the number of children under 15 in Blacktown was 68,594 persons, the largest population of children under 15 in GWS. The proportion of dependent students aged 15-24 years in Wollondilly was 5.2% and in Hawkesbury it was 5.3% compared to 7.9% in The Hills Shire. This may reflect difficulties with travel in areas on the urban fringe. Fairfield had the highest proportion of non-dependent children (11.4%) and Blue Mountains (6.0%) the lowest.

## Lone Parent, Lone Person and Group Households

This section discusses the disparity between males and females in lone parent, lone person and group households. The gender disparity is greatest in the lone parent category with more than 80 percent of lone parents being female and less than 20 percent being male. In Fairfield the gap is wider with only 13.7% of lone parents being male and 86.3% being female which is higher than the GWS average of 15.6% and 84.4% respectively. In Wollondilly and Hawkesbury there were 17.5% male lone parents compared to 82.5% female lone parents.

Lone person households had a less obvious gap although there were generally slightly more female lone persons than male lone persons except in Auburn where 50.1% of lone persons were male and 49.4% female and in Liverpool where 50.7% were male and 49.3% female. Blue Mountains had the largest gap with 60.3% female lone persons compared with 39.7% male lone persons.

Group households had higher proportions of males than females. In GWS the average was 60.8% male compared to 39.2% female which may have been due to some LGAs having much higher ratios than others. The highest proportion of males in group households was in Auburn with 72.2% males compared to 27.8% females. Holroyd's proportion of males (67.1%) was also high compared to females (32.9%) as was Parramatta's (62.9% male: 37.1% female). In the Rest of Sydney the proportions were more even with 54.1% male and 45.9% female group household members.

Detailed information with numbers and proportion can be found in Table 4.

## Family Composition 2011

In 2011 The Hills Shire had the highest proportion of couple families with children (58.7%), which was higher than the GWS average (52.4%) and much higher than Blue Mountains (45.2%) with the lowest proportion. Blue Mountains had the highest proportion of couple families without children (38.3%) compared to the GWS average of 28.1% and Fairfield with the lowest proportion of 23.3%.

Fairfield had the highest proportion of one parent families (22.6%). This was much higher than the GWS average (17.9%) and more than double the Hills Shire (10.4%) which had the lowest proportion. Campbelltown had the second highest proportion of lone parent families (22.3%) followed by Blacktown (19.5%). Due to having the largest population in GWS, Blacktown had the highest number of lone parent families and in fact the highest number of families in each category.

Detailed information with numbers and proportions can be found in Table 5 and Figure 1.

## Number of persons in Household

The most common household size in 2011 was two persons. In GWS 27.4% of the population lived in a two person household. The next most common size was four persons (19.9%) followed by three persons (18.4%) and then one person (18.1%). Only 9.8% of households had five persons and 6.4% had six or more persons.

Auburn had the highest proportion of five person (12.1%) and six person households (9.5%) and Blue Mountains had the lowest proportions of five person (6.5%) and six person (2.9%) households. Blue

Mountains had the highest proportion of one person (25.6%) and two person (34.3%) households and the lowest in all other household sizes. Auburn had the highest proportion of three person (19.8%) households.

Table 6 and Figure 2 show more detail relating to the number of persons usually resident in a household.

Table 1: Household/family composition for GWS LGAs, 2001 - 2011

<b>Household Composition and Family Composition by number &amp; percent for GWS LGAs, 2001 - 2011</b>												
<b>Household/family composition</b>			<b>Bankstown</b>		<b>Camden</b>		<b>Campbelltown</b>		<b>Fairfield</b>		<b>Liverpool</b>	
			<b>No</b>	<b>%</b>	<b>No</b>	<b>%</b>	<b>No</b>	<b>%</b>	<b>No</b>	<b>%</b>	<b>No</b>	<b>%</b>
Family Households	Couple family no children	2001	11,441	20.8%	3,350	23.5%	8,249	17.6%	9,204	16.7%	9,109	18.8%
		2006	11,220	19.6%	3,674	22.6%	8,996	18.8%	9,298	16.6%	9,111	17.4%
		2011	11,051	18.5%	4,332	23.5%	9,880	20.1%	9,642	16.7%	9,639	17.1%
	Couple family with children	2001	22,930	41.7%	6,882	48.2%	20,610	44.1%	26,370	47.8%	23,159	47.7%
		2006	22,881	39.9%	7,614	46.9%	18,992	39.7%	24,787	44.2%	23,769	45.5%
		2011	24,216	40.6%	8,413	45.7%	18,636	38.0%	25,021	43.4%	25,863	45.8%
	One parent family	2001	6,661	12.1%	1,464	10.3%	7,977	17.1%	8,114	14.7%	6,031	12.4%
		2006	7,598	13.2%	1,814	11.2%	8,254	17.3%	9,435	16.8%	6,982	13.4%
		2011	8,524	14.3%	2,068	11.2%	8,239	16.8%	10,231	17.7%	7,916	14.0%
	Other family	2001	796	1.4%	119	0.8%	463	1.0%	920	1.7%	580	1.2%
		2006	771	1.3%	122	0.8%	535	1.1%	974	1.7%	587	1.1%
		2011	827	1.4%	150	0.8%	626	1.3%	1,065	1.8%	600	1.1%
Total family households	2001	41,828	76.0%	11,815	82.8%	37,299	79.8%	44,608	80.9%	38,879	80.1%	
	2006	42,470	74.1%	13,224	81.5%	36,777	76.9%	44,494	79.3%	40,449	77.4%	
	2011	44,618	74.8%	14,963	81.3%	37,381	76.2%	45,959	79.7%	44,018	77.9%	
Lone person household	2001	10,464	19.0%	1,885	13.2%	6,927	14.8%	7,662	13.9%	7,003	14.4%	
	2006	11,305	19.7%	2,225	13.7%	8,048	16.8%	8,338	14.9%	7,881	15.1%	
	2011	11,454	19.2%	2,591	14.1%	8,856	18.0%	8,736	15.1%	8,595	15.2%	
Group household	2001	1,106	2.0%	278	1.9%	979	2.1%	1,073	1.9%	927	1.9%	
	2006	1,087	1.9%	278	1.7%	921	1.9%	1,077	1.9%	920	1.8%	
	2011	1,166	2.0%	322	1.7%	1,050	2.1%	1,143	2.0%	977	1.7%	
Other household	2001	1,612	2.9%	292	2.0%	1,544	3.3%	1,782	3.2%	1,735	3.6%	
	2006	2,482	4.3%	507	3.1%	2,077	4.3%	2,220	4.0%	2,996	5.7%	
	2011	2,447	4.1%	532	2.9%	1,793	3.7%	1,828	3.2%	2,880	5.1%	
Total Households	2001	55,010	100.0%	14,270	100.0%	46,749	100.0%	55,125	100.0%	48,544	100.0%	
	2006	57,344	100.0%	16,234	100.0%	47,823	100.0%	56,129	100.0%	52,246	100.0%	
	2011	59,685	100.0%	18,408	100.0%	49,080	100.0%	57,666	100.0%	56,470	100.0%	

Table 1 Household/family composition continued



**Household Composition and Family Composition by number & percent for GWS LGAs, 2001 - 2011 (continued)**

Household/family composition		Wollondilly			Auburn		Blacktown		Blue Mountains		Hawkesbury	
		No	%	No	%	No	%	No	%	No	%	
Family Households	Couple family no children	2001	2,996	24.6%	2,868	16.7%	15,741	19.1%	6,818	24.6%	4,695	22.6%
		2006	3,337	24.9%	3,637	17.5%	16,925	19.0%	7,218	25.5%	4,850	22.9%
		2011	3,652	25.4%	4,630	19.7%	18,331	19.0%	7,625	26.0%	5,086	23.4%
	Couple family with children	2001	5,645	46.4%	7,492	43.7%	36,684	44.5%	9,589	34.6%	8,656	41.6%
		2006	5,988	44.7%	8,222	39.6%	37,832	42.5%	9,186	32.5%	8,129	38.5%
		2011	6,172	42.9%	9,402	40.1%	42,246	43.8%	9,169	31.2%	8,118	37.3%
	One parent family	2001	1,143	9.4%	1,892	11.0%	12,253	14.9%	2,925	10.5%	2,397	11.5%
		2006	1,297	9.7%	2,346	11.3%	13,620	15.3%	3,026	10.7%	2,448	11.6%
		2011	1,537	10.7%	2,623	11.2%	14,648	15.2%	3,078	10.5%	2,717	12.5%
	Other family	2001	71	0.6%	379	2.2%	1,106	1.3%	192	0.7%	156	0.8%
		2006	88	0.7%	417	2.0%	1,111	1.2%	211	0.7%	154	0.7%
		2011	109	0.8%	539	2.3%	1,246	1.3%	179	0.6%	166	0.8%
	Total family households	2001	9,855	80.9%	12,631	73.7%	65,784	79.8%	19,524	70.4%	15,904	76.5%
		2006	10,710	80.0%	14,622	70.3%	69,488	78.1%	19,641	69.4%	15,581	73.7%
		2011	11,470	79.8%	17,194	73.3%	76,471	79.3%	20,051	68.3%	16,087	74.0%
	Lone person household	2001	1,744	14.3%	2,994	17.5%	12,138	14.7%	6,509	23.5%	3,492	16.8%
		2006	2,007	15.0%	3,500	16.8%	14,188	15.9%	6,842	24.2%	3,901	18.5%
		2011	2,245	15.6%	3,759	16.0%	15,098	15.7%	7,185	24.5%	4,260	19.6%
Group household	2001	197	1.6%	760	4.4%	1,838	2.2%	805	2.9%	498	2.4%	
	2006	177	1.3%	932	4.5%	1,927	2.2%	765	2.7%	515	2.4%	
	2011	237	1.6%	1,123	4.8%	2,090	2.2%	799	2.7%	496	2.3%	
Other household	2001	380	3.1%	753	4.4%	2,696	3.3%	911	3.3%	891	4.3%	
	2006	491	3.7%	1,731	8.3%	3,426	3.8%	1,060	3.7%	1,142	5.4%	
	2011	419	2.9%	1,375	5.9%	2,743	2.8%	1,340	4.6%	900	4.1%	
Total Households	2001	12,176	100.0%	17,138	100.0%	82,456	100.0%	27,749	100.0%	20,785	100.0%	
	2006	13,385	100.0%	20,785	100.0%	89,029	100.0%	28,308	100.0%	21,139	100.0%	
	2011	14,371	100.0%	23,451	100.0%	96,402	100.0%	29,375	100.0%	21,743	100.0%	

Table 1 Household/family composition continued



### Household Composition and Family Composition by number & percent for GWS LGAs, 2001 - 2011 (continued)

Household/family composition		Holroyd			Parramatta		Penrith		The Hills Shire		GWS	
		No	%	No	%	No	%	No	%	No.	%	
Family Households	Couple family no children	2001	6,424	20.9%	10,405	20.2%	11,516	20.1%	10,515	23.9%	113,331	20.1%
		2006	6,725	20.8%	11,300	20.7%	12,424	21.1%	12,242	23.9%	120,957	20.2%
		2011	7,048	20.4%	12,806	21.4%	13,267	21.6%	13,101	24.0%	130,090	20.4%
	Couple family with children	2001	11,288	36.7%	17,996	35.0%	25,019	43.7%	23,424	53.2%	245,744	43.6%
		2006	11,588	35.8%	18,239	33.5%	23,662	40.2%	26,250	51.3%	247,139	41.2%
		2011	13,175	38.1%	21,053	35.2%	23,687	38.5%	27,719	50.9%	262,890	41.3%
	One parent family	2001	3,694	12.0%	5,658	11.0%	7,633	13.3%	3,374	7.7%	71,216	12.6%
		2006	4,047	12.5%	5,879	10.8%	8,224	14.0%	4,263	8.3%	79,233	13.2%
		2011	4,403	12.7%	6,326	10.6%	8,805	14.3%	4,745	8.7%	85,860	13.5%
	Other family	2001	529	1.7%	868	1.7%	583	1.0%	416	0.9%	7,178	1.3%
		2006	530	1.6%	939	1.7%	637	1.1%	419	0.8%	7,495	1.3%
		2011	599	1.7%	984	1.6%	735	1.2%	458	0.8%	8,283	1.3%
	Total family households	2001	21,935	71.3%	34,927	67.9%	44,751	78.2%	37,729	85.8%	437,469	77.6%
		2006	22,890	70.7%	36,357	66.7%	44,947	76.3%	43,174	84.4%	454,824	75.9%
		2011	25,225	72.9%	41,169	68.9%	46,494	75.6%	46,023	84.5%	487,123	76.5%
Lone person household	2001	6,374	20.7%	11,674	22.7%	9,169	16.0%	4,527	10.3%	92,562	16.4%	
	2006	6,985	21.6%	12,631	23.2%	10,578	18.0%	5,750	11.2%	104,179	17.4%	
	2011	6,902	19.9%	13,159	22.0%	11,419	18.6%	6,393	11.7%	110,652	17.4%	
Group household	2001	1,036	3.4%	2,003	3.9%	1,449	2.5%	755	1.7%	13,704	2.4%	
	2006	906	2.8%	2,220	4.1%	1,403	2.4%	894	1.7%	14,022	2.3%	
	2011	885	2.6%	2,376	4.0%	1,477	2.4%	872	1.6%	15,013	2.4%	
Other household	2001	1,427	4.6%	2,827	5.5%	1,882	3.3%	984	2.2%	19,716	3.5%	
	2006	1,607	5.0%	3,277	6.0%	1,984	3.4%	1,320	2.6%	26,320	4.4%	
	2011	1,602	4.6%	3,065	5.1%	2,111	3.4%	1,205	2.2%	24,240	3.8%	
Total Households	2001	30,772	100.0%	51,431	100.0%	57,251	100.0%	43,995	100.0%	563,451	100.0%	
	2006	32,388	100.0%	54,485	100.0%	58,912	100.0%	51,138	100.0%	599,345	100.0%	
	2011	34,614	100.0%	59,769	100.0%	61,501	100.0%	54,493	100.0%	637,028	100.0%	

Source: ABS Census 2011 table T14

- (a) The 'Household composition' variable replaced 'Household type' which was used in 2001
- (b) The 'Family composition' variable replaced 'Family Type' which was used in 2001
- (c) In multiple family households, only the family composition of the primary family is included
- (d) Comprises 'Visitors only' and 'Other non-classifiable' households



Table 2: Relationship in household by number of persons, GWS LGAs and selected regions, 2011

Relationship in Household by number of persons in occupied dwellings (a), GWS LGAs & selected regions, 2011												
LGA	Husband or wife in registered marriage	Partner in defacto marriage (b)	Lone Parent	Child under 15 years	Dependent student (aged 15-24 yrs)	Non-dependent child	Other related individual	Unrelated Individual living in family household	Group household member	Lone person	Visitor (from within Aust) (c)	Total Persons
Bankstown	68,401	4,709	9,070	37,437	11,683	16,823	5,531	1,747	2,568	11,455	2,379	171,803
Camden	22,616	3,206	2,182	13,236	3,186	4,155	967	385	680	2,591	795	53,999
Campbelltown	50,588	7,937	8,719	30,171	8,316	13,493	4,015	1,406	2,166	8,858	2,543	138,212
Fairfield	69,226	4,537	11,227	36,713	13,684	20,643	8,022	2,444	2,538	8,737	2,770	180,541
Liverpool	67,488	6,232	8,480	39,957	11,883	15,945	4,948	1,316	2,050	8,596	2,507	169,402
Wollondilly	17,199	2,696	1,613	9,601	2,152	3,383	729	318	502	2,245	731	41,169
Auburn	27,360	2,002	2,807	13,702	4,398	5,344	2,969	1,547	2,953	3,759	922	67,763
Blacktown	111,913	13,175	15,660	68,594	17,581	25,105	9,025	3,122	4,660	15,098	4,103	288,036
Blue Mountains	28,066	5,223	3,177	13,954	3,798	4,223	946	509	1,625	7,185	1,530	70,236
Hawkesbury	22,595	4,095	2,832	12,606	3,105	4,776	1,065	574	1,013	4,259	1,141	58,061
Holroyd	38,455	3,169	4,629	19,683	5,391	7,664	3,247	1,079	2,049	6,902	1,273	93,541
Parramatta	63,448	6,036	6,580	29,725	8,738	11,258	5,115	2,447	5,681	13,159	2,133	154,320
Penrith	63,834	11,525	9,293	36,944	9,305	15,283	4,223	1,605	3,038	11,419	2,771	169,240
The Hills Shire	77,200	5,344	4,952	35,174	12,894	12,784	3,259	1,100	2,051	6,394	1,693	162,845
Metro South West	295,518	29,317	41,291	167,115	50,904	74,442	24,212	7,616	10,504	42,482	11,725	755,126
Metro West	432,871	50,569	49,930	230,382	65,210	86,437	29,849	11,983	23,070	68,175	15,566	1,064,042
GWS	728,389	79,886	91,221	397,497	116,114	160,879	54,061	19,599	33,574	110,657	27,291	1,819,168
Rest of Sydney	887,488	162,653	90,014	400,635	121,864	138,156	56,989	28,668	113,919	233,167	36,414	2,269,967
Greater Sydney	1,615,877	242,539	181,235	798,132	237,978	299,035	111,050	48,267	147,493	343,824	63,705	4,089,135
NSW	2,514,378	418,722	297,904	1,256,031	339,163	429,512	152,902	66,691	210,927	599,150	129,681	6,415,061

Source: ABS Census 2011 Table B23

- a) Excludes person in 'visitors only' and 'Other non-classifiable' households
- b) Includes same sex couples
- c) Comprises persons who were not at home on Census Night and stated their relationship in another household





**Table 3: Relationship in household by % of persons, GWS & selected regions, 2011**

<b>Relationship in Household by proportion of persons in occupied dwellings (a), GWS LGAs &amp; selected regions, 2011</b>												
<b>LGA</b>	<b>Husband or wife in registered marriage</b>	<b>Partner in defacto marriage (b)</b>	<b>Lone Parent</b>	<b>Child under 15 years</b>	<b>Dependent student (aged 15-24 yrs)</b>	<b>Non-dependent child</b>	<b>Other related individual</b>	<b>Unrelated Individual living in family household</b>	<b>Group household member</b>	<b>Lone person</b>	<b>Visitor (from within Aust) (c)</b>	<b>Total Persons</b>
Bankstown	39.8%	2.7%	5.3%	21.8%	6.8%	9.8%	3.2%	1.0%	1.5%	6.7%	1.4%	100.0%
Camden	41.9%	5.9%	4.0%	24.5%	5.9%	7.7%	1.8%	0.7%	1.3%	4.8%	1.5%	100.0%
Campbelltown	36.6%	5.7%	6.3%	21.8%	6.0%	9.8%	2.9%	1.0%	1.6%	6.4%	1.8%	100.0%
Fairfield	38.3%	2.5%	6.2%	20.3%	7.6%	11.4%	4.4%	1.4%	1.4%	4.8%	1.5%	100.0%
Liverpool	39.8%	3.7%	5.0%	23.6%	7.0%	9.4%	2.9%	0.8%	1.2%	5.1%	1.5%	100.0%
Wollondilly	41.8%	6.5%	3.9%	23.3%	5.2%	8.2%	1.8%	0.8%	1.2%	5.5%	1.8%	100.0%
Auburn	40.4%	3.0%	4.1%	20.2%	6.5%	7.9%	4.4%	2.3%	4.4%	5.5%	1.4%	100.0%
Blacktown	38.9%	4.6%	5.4%	23.8%	6.1%	8.7%	3.1%	1.1%	1.6%	5.2%	1.4%	100.0%
Blue Mountains	40.0%	7.4%	4.5%	19.9%	5.4%	6.0%	1.3%	0.7%	2.3%	10.2%	2.2%	100.0%
Hawkesbury	38.9%	7.1%	4.9%	21.7%	5.3%	8.2%	1.8%	1.0%	1.7%	7.3%	2.0%	100.0%
Holroyd	41.1%	3.4%	4.9%	21.0%	5.8%	8.2%	3.5%	1.2%	2.2%	7.4%	1.4%	100.0%
Parramatta	41.1%	3.9%	4.3%	19.3%	5.7%	7.3%	3.3%	1.6%	3.7%	8.5%	1.4%	100.0%
Penrith	37.7%	6.8%	5.5%	21.8%	5.5%	9.0%	2.5%	0.9%	1.8%	6.7%	1.6%	100.0%
The Hills Shire	47.4%	3.3%	3.0%	21.6%	7.9%	7.9%	2.0%	0.7%	1.3%	3.9%	1.0%	100.0%
Metro South West	39.1%	3.9%	5.5%	22.1%	6.7%	9.9%	3.2%	1.0%	1.4%	5.6%	1.6%	100.0%
Metro West	40.7%	4.8%	4.7%	21.7%	6.1%	8.1%	2.8%	1.1%	2.2%	6.4%	1.5%	100.0%
GWS	40.0%	4.4%	5.0%	21.9%	6.4%	8.8%	3.0%	1.1%	1.8%	6.1%	1.5%	100.0%
Rest of Sydney	39.1%	7.2%	4.0%	17.6%	5.4%	6.1%	2.5%	1.3%	5.0%	10.3%	1.6%	100.0%
Greater Sydney	39.5%	5.9%	4.4%	19.5%	5.8%	7.3%	2.7%	1.2%	3.6%	8.4%	1.6%	100.0%
NSW	39.2%	6.5%	4.6%	19.6%	5.3%	6.7%	2.4%	1.0%	3.3%	9.3%	2.0%	100.0%

Source: ABS Census 2011 Table B23

- a. Excludes person in 'visitors only' and 'Other non-classifiable' households
- b. Includes same sex couples
- c. Comprises persons who were not at home on Census Night and stated their relationship in another household



Table 4: Lone parent & lone person households by number & % of persons, GWS & selected regions, 2011

Selected household relationship by proportions of persons and by sex, 2011								
LGA	Males				Females			
	Lone Parent	Group household member	Lone person	Total Males	Lone parent	Group household member	Lone person	Female total
<b>Metro South West</b>								
Bankstown	15.4%	59.5%	44.6%	49.2%	84.6%	40.5%	55.4%	50.8%
Camden	16.4%	56.8%	44.4%	49.1%	83.6%	43.2%	55.6%	50.9%
Campbelltown	15.5%	59.3%	46.3%	48.8%	84.5%	40.7%	53.7%	51.2%
Fairfield	13.7%	61.0%	49.6%	49.3%	86.3%	39.0%	50.4%	50.7%
Liverpool	14.7%	60.0%	50.1%	49.4%	85.3%	40.0%	49.9%	50.6%
Wollondilly	17.5%	52.6%	48.5%	49.8%	82.5%	47.4%	51.5%	50.2%
<b>Metro West</b>								
Auburn	16.2%	72.2%	50.7%	50.9%	83.8%	27.8%	49.3%	49.1%
Blacktown	15.5%	61.0%	47.6%	49.4%	84.5%	39.0%	52.4%	50.6%
Blue Mountains	16.5%	54.5%	39.7%	48.1%	83.5%	45.5%	60.3%	51.9%
Hawkesbury	17.5%	55.6%	49.3%	49.4%	82.5%	44.4%	50.7%	50.6%
Holroyd	15.8%	67.1%	44.7%	49.4%	84.2%	32.9%	55.3%	50.6%
Parramatta	15.9%	62.9%	46.6%	49.7%	84.1%	37.1%	53.4%	50.3%
Penrith	16.8%	56.4%	48.5%	49.2%	83.2%	43.6%	51.5%	50.8%
The Hills Shire	17.1%	53.3%	40.5%	49.2%	82.9%	46.7%	59.5%	50.8%
Metro South west	14.9%	59.4%	47.3%	49.2%	85.1%	40.6%	52.7%	50.8%
Metro West	16.2%	61.5%	46.1%	49.4%	83.8%	38.5%	53.9%	50.6%
<b>GWS</b>	15.6%	60.8%	46.5%	49.3%	84.4%	39.2%	53.5%	50.7%
Rest of Sydney	16.7%	54.1%	42.8%	48.7%	83.3%	45.9%	57.2%	51.3%
Greater Sydney	16.2%	55.7%	44.0%	49.0%	83.8%	44.3%	56.0%	51.0%
NSW	17.0%	55.6%	45.1%	49.0%	83.0%	44.4%	54.9%	51.0%

Source: ABS Census 2011 Table B23



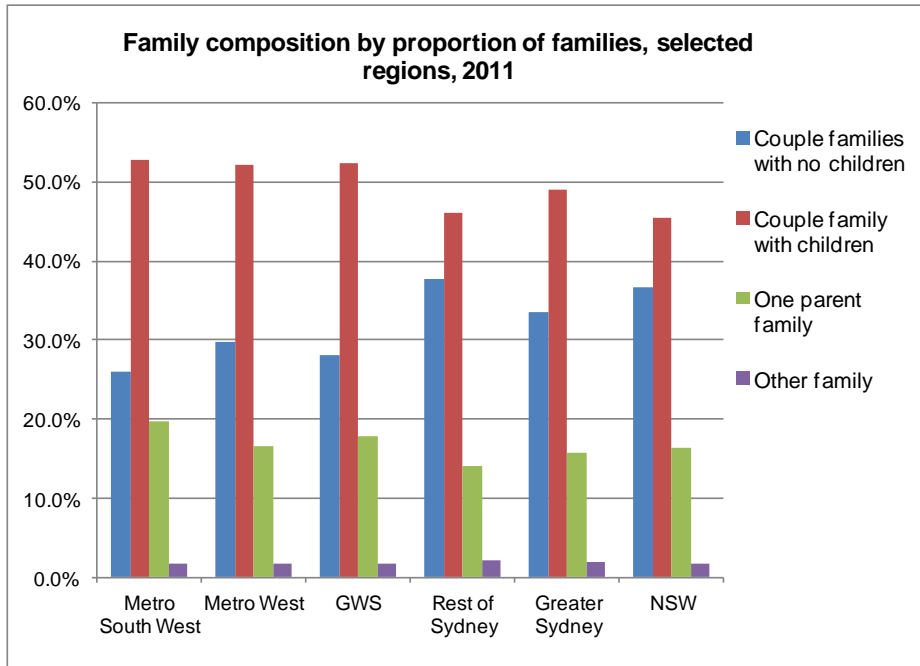
Table 5: Family composition by number & %, GWS LGAs & selected regions, 2011

Family composition by number & % of families for GWS LGAs & selected regions, 2011										
LGA	Number of families					% of families				
	Couple families with no children	Couple family with children	One parent family	Other family	Total	Couple families with no children	Couple family with children	One parent family	Other family	Total
<b>Metro South West</b>										
Bankstown	12,411	24,716	9,069	834	47,030	26.4%	52.6%	19.3%	1.8%	100.0%
Fairfield	11,569	25,855	11,226	1,064	49,714	23.3%	52.0%	22.6%	2.1%	100.0%
Liverpool	11,058	26,419	8,479	607	46,563	23.7%	56.7%	18.2%	1.3%	100.0%
Camden	4,636	8,494	2,181	151	15,462	30.0%	54.9%	14.1%	1.0%	100.0%
Campbelltown	10,770	19,015	8,718	620	39,123	27.5%	48.6%	22.3%	1.6%	100.0%
Wollondilly	3,905	6,247	1,613	111	11,876	32.9%	52.6%	13.6%	0.9%	100.0%
<b>Metro West</b>										
Auburn	5,332	9,628	2,806	540	18,306	29.1%	52.6%	15.3%	2.9%	100.0%
Blacktown	20,467	43,090	15,661	1,248	80,466	25.4%	53.6%	19.5%	1.6%	100.0%
Blue Mountains	7,809	9,220	3,177	179	20,385	38.3%	45.2%	15.6%	0.9%	100.0%
Hawkesbury	5,410	8,220	2,830	162	16,622	32.5%	49.5%	17.0%	1.0%	100.0%
Holroyd	7,781	13,375	4,631	601	26,388	29.5%	50.7%	17.5%	2.3%	100.0%
Parramatta	14,035	21,373	6,576	984	42,968	32.7%	49.7%	15.3%	2.3%	100.0%
Penrith	14,292	24,040	9,295	733	48,360	29.6%	49.7%	19.2%	1.5%	100.0%
The Hills Shire	14,266	27,966	4,955	455	47,642	29.9%	58.7%	10.4%	1.0%	100.0%
Metro South West	54,349	110,746	41,286	3,387	209,768	25.9%	52.8%	19.7%	1.6%	100.0%
Metro West	89,392	156,912	49,931	4,902	301,137	29.7%	52.1%	16.6%	1.6%	100.0%
<b>GWS</b>	143,741	267,658	91,217	8,289	510,905	28.1%	52.4%	17.9%	1.6%	100.0%
Rest of Sydney	241,949	296,240	89,995	13,428	641,612	37.7%	46.2%	14.0%	2.1%	100.0%
Greater Sydney	385,690	563,898	181,212	21,717	1,152,517	33.5%	48.9%	15.7%	1.9%	100.0%
NSW	669,017	831,850	297,908	30,778	1,829,553	36.6%	45.5%	16.3%	1.7%	100.0%

Source: ABS Census, Table B26

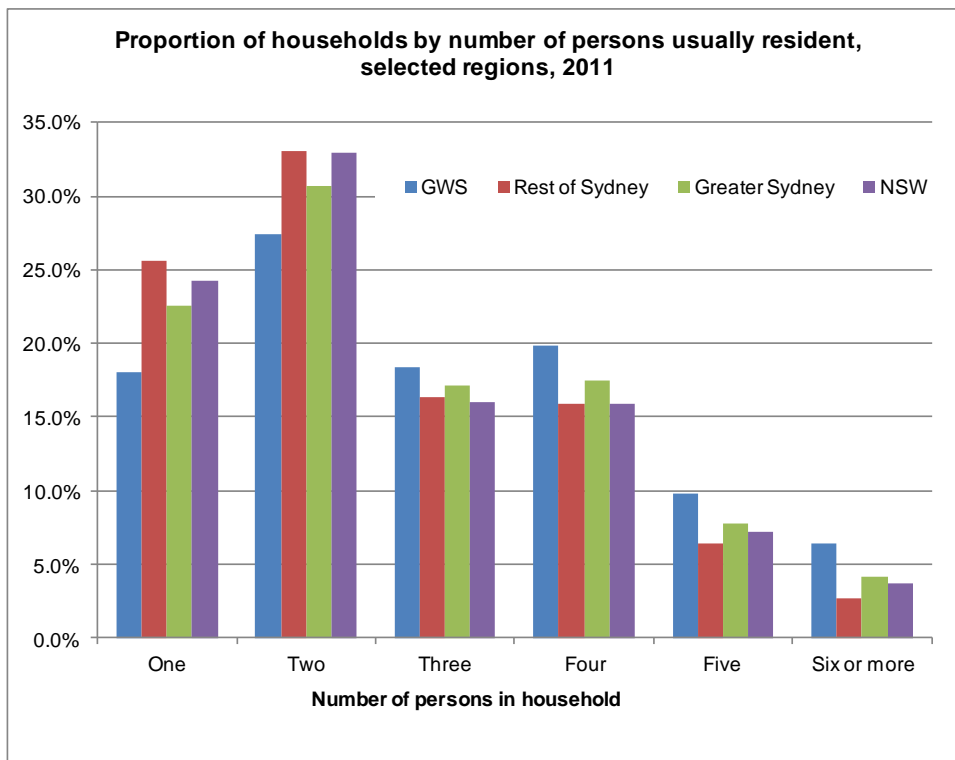


**Figure 1: Family composition by % of families, selected regions, 2011**



Source: ABS Census 2011, Table B26

**Figure 2: Households by number of persons usually resident, selected regions, 2011**



Source: ABS Census 2011, Table B30

**Table 6: Households by number of persons usually resident, GWS LGAs & selected regions, 2011**

Number & % of households by number of persons usually resident (a) in household, GWS LGAs & selected regions, 2011							
Region/LGA	Number of Persons usually resident						Total Households
	One	Two	Three	Four	Five	Six or more	
Camden	2,589	5,171	3,107	4,210	1,849	949	17,875
Campbelltown	8,854	13,396	8,956	8,859	4,235	2,986	47,286
Bankstown	11,454	14,712	9,920	10,624	6,029	4,499	57,238
Fairfield	8,737	13,234	10,570	11,231	6,743	5,320	55,835
Liverpool	8,596	12,743	9,895	11,894	6,232	4,235	53,595
Wollondilly	2,245	4,281	2,347	2,807	1,494	779	13,953
Auburn	3,760	5,682	4,375	4,322	2,158	1,783	22,080
Blacktown	15,098	24,208	18,243	19,836	9,643	6,628	93,656
Blue Mountains	7,183	9,614	4,348	4,258	1,817	811	28,031
Hawkesbury	4,261	6,419	3,588	3,696	1,867	1,014	20,845
Holroyd	6,901	9,277	6,261	5,855	2,837	1,883	33,014
Parramatta	13,158	16,334	10,517	9,686	4,201	2,806	56,702
Penrith	11,418	17,564	10,812	11,205	5,381	3,011	59,391
The Hills Shire	6,393	15,166	10,019	13,375	5,816	2,527	53,296
Metro South West	42,475	63,537	44,795	49,625	26,582	18,768	245,782
Metro West	68,172	104,264	68,163	72,233	33,720	20,463	367,015
<b>GWS</b>	<b>110,647</b>	<b>167,801</b>	<b>112,958</b>	<b>121,858</b>	<b>60,302</b>	<b>39,231</b>	<b>612,797</b>
Rest of Sydney	233,151	299,905	148,696	144,622	58,278	23,937	908,589
Greater Sydney	343,798	467,706	261,654	266,480	118,580	63,168	1,521,386
NSW	599,148	814,683	397,038	392,972	177,216	90,239	2,471,296
Region/LGA	% Proportion						Total Households
	One	Two	Three	Four	Five	Six or more	
Camden	14.5%	28.9%	17.4%	23.6%	10.3%	5.3%	100%
Campbelltown	18.7%	28.3%	18.9%	18.7%	9.0%	6.3%	100%
Bankstown	20.0%	25.7%	17.3%	18.6%	10.5%	7.9%	100%
Fairfield	15.6%	23.7%	18.9%	20.1%	12.1%	9.5%	100%
Liverpool	16.0%	23.8%	18.5%	22.2%	11.6%	7.9%	100%
Wollondilly	16.1%	30.7%	16.8%	20.1%	10.7%	5.6%	100%
Auburn	17.0%	25.7%	19.8%	19.6%	9.8%	8.1%	100%
Blacktown	16.1%	25.8%	19.5%	21.2%	10.3%	7.1%	100%
Blue Mountains	25.6%	34.3%	15.5%	15.2%	6.5%	2.9%	100%
Hawkesbury	20.4%	30.8%	17.2%	17.7%	9.0%	4.9%	100%
Holroyd	20.9%	28.1%	19.0%	17.7%	8.6%	5.7%	100%
Parramatta	23.2%	28.8%	18.5%	17.1%	7.4%	4.9%	100%
Penrith	19.2%	29.6%	18.2%	18.9%	9.1%	5.1%	100%
The Hills Shire	12.0%	28.5%	18.8%	25.1%	10.9%	4.7%	100%
Metro South West	17.3%	25.9%	18.2%	20.2%	10.8%	7.6%	100%
Metro West	18.6%	28.4%	18.6%	19.7%	9.2%	5.6%	100%
<b>GWS</b>	<b>18.1%</b>	<b>27.4%</b>	<b>18.4%</b>	<b>19.9%</b>	<b>9.8%</b>	<b>6.4%</b>	<b>100%</b>
Rest of Sydney	25.7%	33.0%	16.4%	15.9%	6.4%	2.6%	100%
Greater Sydney	22.6%	30.7%	17.2%	17.5%	7.8%	4.2%	100%
NSW	24.2%	33.0%	16.1%	15.9%	7.2%	3.7%	100%

Source: ABS Census, Table B30

Suite 402, Level 4, 146 Marsden Street, Parramatta, NSW, 2150

Postal Address: PO Box 208, Parramatta, NSW, 2124

Ph: (02) 9635 7764 Fax: (02) 9635 8395 Email: westir@pnc.org.au Website: www.westir.org.au

ABN: 65 003 487 965 ACN: 003 487 965

**WESTERN SYDNEY REGIONAL INFORMATION & RESEARCH SERVICE**

